



YOUR KEY TO PARADISE!



Chocuaco Highlands Forest Paradise
45 Hectares :: \$350,000



**WATCH
VIDEO**

Osa Pen Realty announces a new listing located in the forested slopes beyond the Chocuaco Basin of the northern part of the Osa Peninsula, not too far from the boundary of the Terraba Swamp lowlands. At \$1 per square meter for this titled property, you can't beat this expanse of primary jungle and awesome view sites.



This remote property is for all practical purposes poised on the very edge of the civilized world, where the gradient between human occupancy and the domain of the jaguar and tapir begin to blur, a bonafide tropical rain-forest paradise.

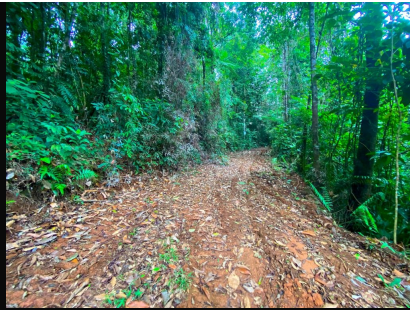


This 45-hectare property is covered mostly in primary rain forest with a few patches of secondary in advanced recovery and two cleared building sites that are ready for immediate construction. Both building sites offer vast panoramic views over the forest canopy, the Terraba Swamp wetlands and the Pacific Ocean coast, including distant views of Isla del Caño.



The property is accessed by the San Juan road that connects San Juan de Rincon with the ferry crossing of Sierpe. It is a 20 minute drive from the highway pavement of Rincon in one direction and about the same distance from the Sierpe ferry crossing in the other direction. From the Rincon turnoff it is another 20 minutes in car to the bustling peninsular capital hub of Puerto Jimenez, where you can count of the full array of supplies needed, groceries, hardware, air and sea ports, hospital, night life, and a full blitz of night life, hotels and cabinas.





With forest that is contiguous with that of Corcovado National Park as well as the Terraba Lowlands, expect the full range of tropical flora and fauna, including five species of felines, four species of monkeys, all kinds of birds, reptiles, and insects and an entire panoply of hard-wood and tropical trees and plants. In fact, the Osa is world-renowned as the repository of a full 2.5% of the world's biodiversity and you can expect that full range on this very property.



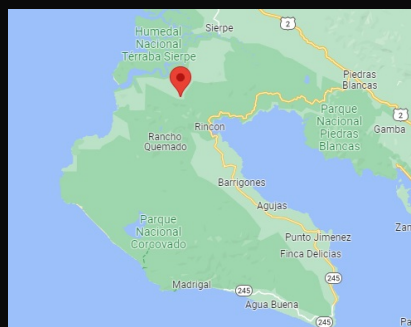
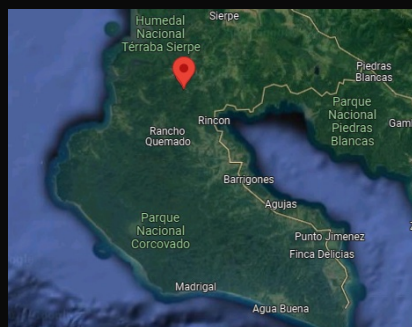
Several springs and streams on the property provide for water security from the farm itself. It is far beyond the national power grid, so solar power only for the time being. But count on year-round access by 4WD vehicles as well as internal road network inside the property itself, presently negotiable by 4WD only. But the new ownership can improve the roads regular vehicular access.



Call or write for more information or to schedule your showing today.



Don't forget to take a look at our **VIDEO!**



Paul Collar
Osa Pen Realty : Your Key to
Paradise!
+506 8704-0027
land@osapenrealty.com

